

# THERMOTHERAPY

## FANGOHEATER

The compact design as table model makes the unit suitable to be used in any kind of practice. It is possible to process Paraligno as well as Parafango Battaglia in the heater. Because of the direct heating system, the Fango heater is highly suitable for sterilising paraffin (at 135 °C)\*. The Fango heater is glass wool isolated and is delivered including a splash cover with cold grip.

\* = Sterilisation is only possible when Parafango Battaglia is used (Paraligno can't stand these high temperatures).



### 1468904 FANGOHEATER

#### TECHNICAL SPECIFICATIONS

Mains voltage	: 220 – 240 V, 50 – 60 Hz
Current consumption	: 1200 W
Range of thermostat	: 0 – 100° C
Sterilization temperature	: 135° C
Safety device	: automatic switch-off when overheated (160° C)
Capacity	: 15 l
Dimensions	: 37 x 37 x 41,5 cm

#### STANDARD ACCESSORIES

1468751	Operating manual fangoheater
3444290	Mains cable

#### OPTIONAL ACCESSORIES

3448112	Paraffin wax, pure form, 25 kg
3448164	Paraligno, 5 kg
3448108	Parafango Battaglia, 12 kg
3448137	Parafoil, 40x60 cm, 1000 sheets
3448136	Heat-transfer liquid for the paraffin-bath, 5 l

## PARAFFIN-BATH

The Enraf-Nonius paraffin bath operates on the "au-bain-marie" principle. The paraffin is heated directly by the heat transferred from a heat-transfer liquid. As heat-transfer liquid you can use a special thermal-oil (13 ltr). The size of the bath makes it suitable for so-called dipping treatments. It is possible to heat Paraligno, Parafango and pure paraffin in this bath.



- Quicker heating and more even heat distribution
- Practically no temperature fluctuations in the paraffin
- Mobile
- Thermostatic temperature control (30-90 °C)
- Overheating safety mechanism

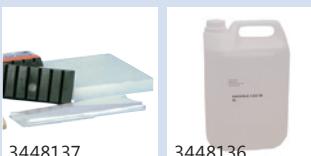
### 3448162 PARAFFIN-BATH 230V/50HZ 3448163 PARAFFIN-BATH 115V/60HZ

#### TECHNICAL SPECIFICATIONS

Temperature range:	30-90°C
Internal dimensions:	50x30x21 cm (30 l)
External dimensions:	58x32x50 cm
Mains voltage:	230 V, 50/60 Hz
Power consumption:	2000 W (1760 W for the 115 V version)

#### STANDARD ACCESSORIES

1400005	Operating manual Paraffin bath
---------	--------------------------------



# PACKHEATERS

The Packheater is used for heating packs. The Enraf-Nonius package of Packheaters includes tabletop models and larger mobile models in various sizes. For every use there is a suitable model available



**3448191 PACKHEATER**



**3448260 PACKHEATER SS-2**



**3448265 PACKHEATER E-1**



**3448264 PACKHEATER E-2**



**3448261 PACKHEATER M-2**



**3448262 PACKHEATER M-4**

	3448191 Packheater	Packheater SS2	Packheater E-1	Packheater E-2	Packheater M-2	Packheater M-4
<b>TECHNICAL SPECIFICATIONS</b>						
Tank capacity:	29 l	49,3 l	15,4 l	43,2 l	68,8 l	135,8 l
Temperature range:	50-100°C	71-74°C	71-74°C	71-74°C	71-74°C	71-74°C
Mains voltage:	220-240 V	220-240 V	220-240 V	220-240 V	220-240 V	220-240 V
Frequentie:	50/60 Hz	50/60 Hz	50/60 Hz	50/60 Hz	50/60 Hz	50/60 Hz
Power consumption:	700 W	1000 W	1000 W	1000 W	1000 W	1500 W
Dimensions: (wxdxh):	height 42 cm, diameter 35 cm	85,1x52,1x39,4 cm	40,6x33x22,9 cm	54,6x36,8x31,8 cm	85,1x67,3x39,4 cm	85x88,9x50,2 cm
Weight:	7 kg	29,9 kg	7 kg	13,4 kg	37,3 kg	59,7 kg
<b>STANDARD ACCESSORIES</b>						
	1400725 User manual	8 x Enno Moist 25x30 cm (3448176)	4 x Enno Moist 25x30 cm (3448176)	6 x Enno Moist in 3 different sizes	12 x Enno Moist 25x30 cm (3448176)	24 x Enno Moist 25x30 cm (3448176)

# ACCESSORIES PACKHEATERS

## OPTIONAL ACCESSORIES

3448135	Base grid, plastic-coated <sup>(1)</sup>
3448199	Rack, stainless steel <sup>(1)</sup>
3448272	Storage rack <sup>(2)</sup>
3448132	Tongs made of wood
3448166	Enno Moist 12x30 cm
3448167	Enno Moist 25x30 cm
3448281	Enno Moist 25x45 cm
3448283	Enno Moist 25x50 cm
3448282	Enno Moist 25x60 cm
3448169	Enno Moist oversize, 38x61 cm <sup>(3)</sup>
3448168	Enno Moist neckmodel, 15x61 cm <sup>(3)</sup>
3448176	Protective sleeve Enno Moist standard (25x30 cm)
3448175	Protective sleeve Enno Moist, oversized model (75x82 cm)
3448177	Protective sleeve Enno Moist neck model
3448311	Stadtholder Moorpacking 13x28 cm
3448310	Stadtholder Moorpacking 18x28 cm
3448312	Stadtholder Moorpacking 22x40 cm
3448313	Stadtholder Moorpacking 30x40 cm
3448314	Stadtholder Moorpacking neck-/shoulder model
3448209	Hot/Cold packs 30x38 cm, 2 pieces
3448208	Hot/Cold packs 13x30 cm, 6 pieces.
3448207	Hot/Cold packs 13x14 cm, 12 pieces
3448130	Towelling holder for 3 packs 3448208

(1) = only for Packheater Model 3448191  
 (2) = only for Packheater Model M-2 and M-4  
 (3) = not for Packheater Model E-2 or 3448191



## ENNO MOIST

Cotton pack filled with volcanic mineral grains.



## STADTHOLDER MOORPACK

Synthetic pack filled with 'moor'.  
 • Heat is released extremely slowly  
 • Can be heated in a microwave

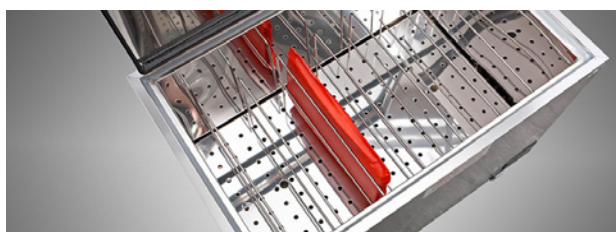


## HOT/COLDPACKS

Synthetic gel pack.



# PACKHEATERS (TYPE WB)



The packheaters are used for heating and keeping warm ('hot packs').

## Features

- High quality packheater
- With stainless steel insert grid (removable)
- Housing made of stainless steel with structured surface
- Top lid handle bar in red, blue, green, yellow or black
- Double isolated top lid \*
- Gas spring supported top lid \*
- Energy saving insulation
- Electronic temperature control with digital temperature display \*
- Protected against overheating
- Temperature measurement in the water
- Silicone heating element with large surface for a fast and consistent heating process
- Power On indicator lamp
- Heating indicator lamp
- Water outlet on the front side, ball valve 1/2"
- Medical device class I

\* = except for WB 4-30

The packheaters can be supplied with a mobile frame (optional), consisting of:

- Powder coated steel frame
- Four castors (two of which can be locked)
- Four support points for securing the bath
- Stainless steel storage shelf

## TECHNICAL SPECIFICATIONS

Packheater / model	WB 4-30	WB 6-50	WB 8-90	WB 16-130
Tank capacity	30 liter	47 liter	82 liter	99 liter
Number of bars (insert grid)	-	3	4	7
Number of (optional) packs possible (25x30 cm)	5	8	12	18
Gas spring supported lid	-	Yes	Yes	Yes
Power supply	220-240V, 50/60Hz	220-240V, 50/60Hz	220-240V, 50/60Hz	220-240V, 50/60Hz
Heating capacity	900 W	1500 W	1500 W	1500 W
Temperature range	30 – 85 °C	30 – 85 °C	30 – 85 °C	30 – 85 °C
Accuracy (temp. setting)	5 K	0,1 K	0,1 K	0,1 K
Temperature control	thermostatic	electronic	electronic	electronic
Control accuracy	± 5,0 K	± 2,0 K	± 2,0 K	± 2,0 K
Digital temperature display	-	Yes	Yes	Yes
Thermal cut-out (safety)	95 °C	95 °C	95 °C	95 °C
External dimensions (lxwxh)	575x365x370 mm	675x470x385 mm	725x470x490 mm	775x490x515 mm
Internal dimensions (lxwxh)	500x300x200 mm	590x400x200 mm	645x400x320 mm	695x420x340 mm
Net weight	12,0 kg	23,2 kg	28,8 kg	30,3 kg
Shipping weight	15 kg	25,5 kg	45 kg	50 kg
Cross section of power cable	3 x 1 mm <sup>2</sup>	3 x 1 mm <sup>2</sup>	3 x 1 mm <sup>2</sup>	3 x 1 mm <sup>2</sup>
Device fuses (IEC 60127-2/4 • DIN VDE 0820)	6,3x32 5,0 A fast acting	6,3x32 8,0 A fast acting	6,3x32 8,0 A fast acting	6,3x32 8,0 A fast acting
Medical Device Class	Class I	Class I	Class I	Class I

## ORDERING DATA

3448401	Packheater WB 4-30 (30 l) 220-240V, 50/60Hz
3448402	Packheater WB 6-50 (47 l) 220-240V, 50/60Hz
3448403	Packheater WB 8-90 (82 l) 220-240V, 50/60Hz
3448404	Packheater WB 16-130 (99 l) 220-240V, 50/60Hz

## OPTIONAL ACCESSORIES

3448421	Mobile frame for WB 4-30
3448422	Mobile frame for WB 6-50
3448423	Mobile frame for WB 8-90
3448424	Mobile frame for WB 16-130



**ENRAF-NONIUS**  
Vareseweg 127  
3047 AT Rotterdam  
The Netherlands  
T.: +31-(0)10 - 203 06 00  
E: info@enraf-nonius.nl  
www.enraf-nonius.com

For a complete overview of available hot packs (optional accessories), please visit [www.enraf-nonius.com/electrotherapy](http://www.enraf-nonius.com/electrotherapy)



# CHILLING UNITS



Mobile quick-chiller to bring cold packs to the ideal temperature for use and to make sure they stay that way all day long. The specially designed chilling elements guarantee a rapid chilling. Easily moved on the 7½ cm rubber wheels.



## 3448274 CHILLING UNIT MODEL C-5

### STANDARD ACCESSORIES

1468751	Operating manual
3448284	6x Colpac 28x36 cm
3448288	6x Colpac 16x28 cm

### OPTIONAL ACCESSORIES

3448288	Colpac 16x28 cm
3448284	Colpac 28x36 cm
3448209	Hot/Cold packs 30x38 cm, 2 pieces
3448208	Hot/Cold packs 13x30 cm, 6 pieces.
3448207	Hot/Cold packs 13x14 cm, 12 pieces
3448130	Towelling holder for 3 packs 3448208



### TECHNICAL SPECIFICATIONS

Mains voltage:	220-240 V, 50 Hz
Current:	2 A
Work:	0.14914 kWh of 1/5 hp
Type of refrigerant:	R-134A:
Amount of refrigerant:	0,325L
Testpressure:	high 1.62 MPa (235 psi); low 1.03 MPa (150 psi)
Normal operating temperature:	-12°C tot -6°C
Dimensions (hwxwb):	84 x 41 x 69 cm
Weight:	74 kg



**ENRAF-NONIUS**  
Vareseweg 127  
3047 AT Rotterdam  
The Netherlands  
T.: +31-(0)10 - 203 06 00  
E: info@enraf-nonius.nl  
www.enraf-nonius.com

# INFRARED RADIATORS

For many years, Infrared Radiators have been a well-known accessory in the field of thermotherapy. Infra-red thermotherapy is often used for the reduction of pain as well as for general healing of wounds. The skin absorbs the heat and passes it through to the blood stream in a natural way.

Positioning is easy because of the specially developed fast fixation device. The unit must be ordered with a stable mobile stand, with height adjustment and safety locks on the wheels.



**1979901 IR 6 INFRA-RED RADIATOR**

#### TECHNICAL SPECIFICATIONS IR 6

Radiators:	6x150 W
Power consumption (220 VAC):	900 W (220 VAC)
Timer adjustment:	up to 30 minutes
Dimensions:	46x73x20 cm (WxLxD)
Weight:	approx. 14,6 kg



**1979902 IR 3 INFRA-RED RADIATOR**

#### TECHNICAL SPECIFICATIONS IR 3

Radiators:	3x150 W
Power consumption (220 VAC):	450 W (220 VAC)
Timer adjustment:	up to 30 minutes
Dimensions:	36x73x20 cm (WxLxD)
Weight:	approx. 11,3 kg

#### OPTIONAL ACCESSORIE

3444639 Mobile support for IR3 and IR6 radiators



# HALOGEN INFRARED SPOTS

New



model IRS 2

The IRS Halogen Infrared Spots form a new generation of radiators for heat treatment (infrared thermotherapy).

Two versions of the IRS are available:

- IRS (600W / 3x200W halogen)
- IRS 2 (400W / 2x200W halogen)

## Major advantages of the IRS halogen radiators

- *Safety* - the infrared radiators IRS and IRS 2 are the only two radiators which have been tested and approved for photobiological safety. This means that there is no danger for the eyesight;
- *Energy efficiency* - the halogen radiator IRS and IRS 2 consume 30% less power than IR-radiators, that are equipped with conventional light bulbs (while delivering the same amount of infrared energy);
- *Patient comfort* - conventional infrared radiators generate a 'burning sensation' on the skin because the emitted light component is very large. By combining the halogen tube with a special filter, the proportion of light in the IRS radiators is reduced which avoids such 'burning sensations'.

IRS Halogen radiators must be connected to a (mobile) support system since the power supply is built into the stand. These (optional) stands must be ordered separately.

## MODEL IRS (600W)

The Halogen Infrared Spot IRS combines modern design with functionality and efficiency. With a capacity of 600 Watt (3x200W) it produces the equivalent light output as a 900 Watt infrared spot equipped with conventional light bulbs.

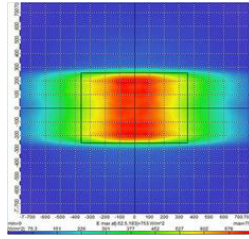
The specially designed reflectors of the Halogen Infrared Spot IRS spread the radiation wide and evenly on the patient's body.

In combination with the stand SST / SSU / SSV, the Halogen Infrared Spot IRS builds a functional entity that matches the current state of the art and stands out by its straight-line design.



model IRS

# HALOGEN INFRARED SPOTS



## Features

- Powder-coated aluminium / sheet steel housing
- Housing colour: white / black
- 3 halogen lamps (200W each), emitting infrared radiation in a therapeutically effective range
- 3 reflectors, spreading the radiation wide and evenly
- Complies with the photo-biological safety standard (DIN EN 62471)
- Electronic timer with repeat-function
- Protection grid to avoid burns
- Main switch with power indicator
- Mountable to mobile stand SST / SSU / SSV (optional)
- Mountable to wall arm HWA (optional)

## MODEL IRS 2 (400W)

The IRS 2 is an economic halogen spot and is based on the same attractive design and the same technology as the larger version IRS.

The IRS 2 has a simplified control unit and is equipped with 2 halogen lamps (200W each) and 2 reflectors.

With a capacity of just 400W the IRS 2 produces the same light output as a 600 Watt spot equipped with conventional light bulbs.

Its compact outside dimensions and its complete functionality make the Infrared spot IRS 2 a modern and practical device.

## TECHNICAL SPECIFICATIONS

	IRS 2	IRS
Power supply *	220-240V, 50/60Hz	220-240V, 50/60Hz
Number of lamps	2	3
Heating capacity per lamp	200 W	200 W
Max. heating capacity	400 W	600 W
Lamps individually switchable	No	Yes
Timer	Max. 60 min.	Max. 99 min.
Device fuses	6,3x32 fast acting 5,0 A IEC 60127-2/4 • DIN VDE 0820	6,3x32 fast acting 5,0 A IEC 60127-2/4 • DIN VDE 0820
Overall dimensions (LxWxH)	555 x 365 x 145 mm	700 x 395 x 145 mm
Net weight	11,6 kg	12,0 kg
Shipping weight	13,5 kg	14,5 kg
Packing dimensions (LxWxH)	815 x 500 x 500 mm	815 x 500 x 500 mm
Medical Device Class	Class IIa	Class IIa

\* = power supplied via the support system (optional)

## ORDERING DATA

3441803	Halogen IR-radiator IRS-2 (400W), 220-240V, 50/60Hz*
3441804	Halogen IR-radiator IRS (600W), 220-240V, 50/60Hz*

\* without stand and without mains cable. Please order separately!

## OPTIONAL ACCESSORIES

3441821	Mobile stand SST (T-base), including mains cable
3441822	Mobile stand SSU (U-base), including mains cable
3441823	Mobile stand SSV (V-base), including mains cable
3441824	Wall arm HWA, including mains cable



# INFRARED RADIATORS (MODEL TGS)



The traditional TGS Infrared radiators are used for heat treatment (infrared thermotherapy) in physiotherapy.

Two versions of the TGS are available:

- TGS 6.2 (900W / 6x150W infrared)
- TGS 3.2 (450W / 3x150W infrared)

The TGS infrared radiators must be connected to a (mobile) support system since the power supply is built into the stand. These (optional) stands must be ordered separately.

## TGS 6.2 (900 W)

### Features

- Powder-coated aluminium / sheet steel housing
- Housing colour: white
- Handle bar colours: red, blue, green, yellow or black
- Electronic timer (treatment time max. 60 min.)
- 6 therapeutic IR-lamps (Philips Infrared PAR 38, 150W)
- Each bulb can be switched ON/OFF individually
- Protection grid to avoid burns
- Main switch with power indicator
- Mountable to mobile stand SST / SSU / SSV (optional)
- Mountable to wall arm HWA (optional)

## TGS 3.2 (450 W)

### Features

- Powder-coated aluminium / sheet steel housing
- Housing colour: white
- Handle bar colours: red, blue, green, yellow or black
- Electronic timer (treatment time max. 60 min.)
- 3 therapeutic IR-lamps (Philips Infrared PAR 38, 150W)
- Each bulb can be switched ON/OFF individually
- Protection grid to avoid burns
- Main switch with power indicator
- Mountable to mobile stand SST / SSU / SSV (optional)
- Mountable to wall arm HWA (optional)



**ENRAF-NONIUS**  
Vareseweg 127  
3047 AT Rotterdam  
The Netherlands  
T: +31-(0)10 - 203 06 00  
E: info@enraf-nonius.nl  
www.enraf-nonius.com

# INFRARED RADIATORS (MODEL TGS)

## TECHNICAL SPECIFICATIONS

Infrared radiator / model	TGS 3.2	TGS 6.2
Power supply *	220-240V, 50/60Hz	220-240V, 50/60Hz
Number of lamps	3	6
Heating capacity per light bulb	150 W	150 W
Max. heating capacity	450 W	900 W
Lamps individually switchable	Yes	Yes
Timer	Max. 60 min	Max. 60 min
Device fuses	6,3x32 5 A	6,3x32 5 A
IEC 60127-2/4 DIN VDE 820	fast acting	fast acting
Overall dimensions (LxWxH)	710 x 330 x 160 mm	710 x 490 x 160 mm
Net weight	10,4 kg	9,8 kg
Shipping weight	13 kg	13,3 kg
Packing dimensions (LxWxH)	820 x 480 x 465 mm	820 x 620 x 465 mm
Medical Device Class	Class IIa	Class IIa

\* power supplied via the support system (optional)

## ORDERING DATA

3441801	IR-radiator TGS 3.2 (450W), 220-240V, 50/60 Hz
3441802	IR-radiator TGS 6.2 (900W), 220-240V, 50/60 Hz

## OPTIONAL ACCESSORIES

3441821	Mobile stand SST (T-base), including mains cable
3441822	Mobile stand SSU (U-base), including mains cable
3441823	Mobile stand SSV (V-base), including mains cable
3441824	Wall arm HWA, including mains cable



# MOBILE STAND SST / SSU / SSV & WALL ARM HWA



Mobile stand – model SST



Mobile stand – model SSU



Mobile stand – model SSV

The following (optional) support systems (including mains cable) are available for the IR-radiators model IRS and TGS:

- Mobile stands SST / SSU / SSV
- Wall arm HWA

## Main features mobile stands

- Powder-coated steel frame
- Frame colour white/black (other colour combinations at extra charge)
- 4 rotating castors with parking brake
- Stepless height-adjustment from 164 to 204 cm (top edge stand)
- Lifting support with gas spring
- Front height of stand base: 60 mm (SST) or 65 mm (SSU and SSV); fits under most treatment couches
- Connector for infrared spots with Ondal-coupling (such as IRS / IRS 2 / TGS 3.2 / TGS 6.2)
- Available as T-base, U-base or V-base



**ENRAF-NONIUS**  
Vareseweg 127  
3047 AT Rotterdam  
The Netherlands  
T.: +31-(0)10 - 203 06 00  
E: info@enraf-nonius.nl  
www.enraf-nonius.com

## TECHNICAL DATA

Support system	SST	SSU	SSV
<b>Ordering data</b>	3441821	3441822	3441823
Length	820 mm	800 mm	810 mm
Front width	780 mm	800 mm	820 mm
Rear width	570 mm	800 mm	560 mm
Minimum height	1640 mm	1640 mm	1640 mm
Maximum height	2040 mm	2040 mm	2040 mm
Height of stand base (front)	60 mm	65 mm	65 mm
Nominal Voltage	220-240 V		
Power frequency	50/60 Hz		
Cross section of the power cable	3 x 1 mm <sup>2</sup>		
Packing dimensions (L x W x H)	165 x 29,5 x 16 cm		
Net weight	17,7 kg	17,8 kg	18,5 kg
Packing - gross weight	21,5 kg	21,5 kg	21,5 kg

Wall arm	HWA
<b>Ordering data</b>	3441824
Net weight	8,5 kg
Shipping weight	10 kg
Load range	8-13 kg
Radius of action	1550 mm
Maximum angle of inclination way up	35 °
Maximum angle of inclination way down	55 °
Nominal voltage	220-240 V
Power frequency	50/60 Hz
Cross section of the power cable	3 x 1 mm <sup>2</sup>



3441824



T-BASE



U-BASE



V-BASE